

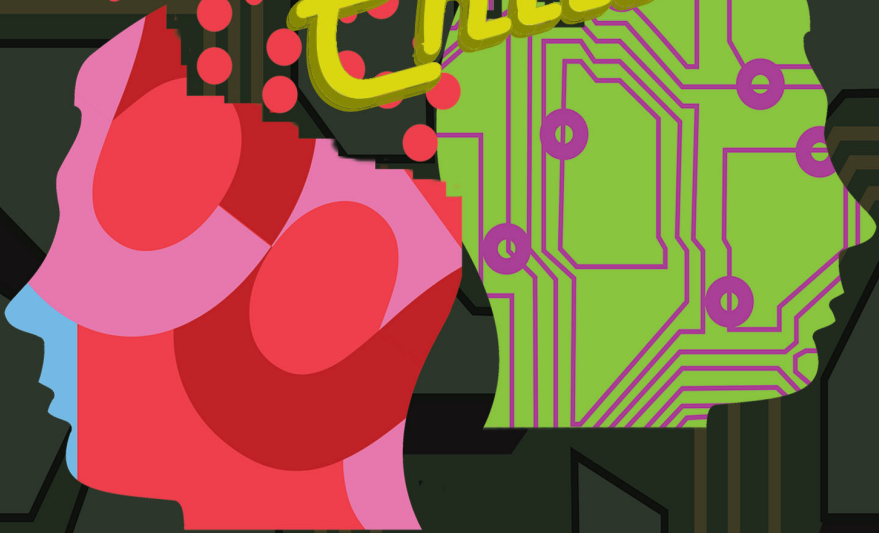
Music and Lyrics by  
**Joe  
Iconis**

Book by  
**Joe  
Tracz**

Based on the Novel by  
**Ned Vizzini**

Directed by  
**Dr. Carrie Winship**

# Be More Chill



Oct 31 – Nov 3, 2019  
Thursday – Saturday at 7:30pm  
Sunday at 3:00pm

Alvina Krause Theatre 226 Center Street  
in Downtown Bloomsburg

• CENTER FOR  
• VISUAL & PERFORMING ARTS

*BUPlayers*

[buplayers.org](http://buplayers.org)



Sponsored by CGA

*The mission of the Theatre & Dance Division is to provide a strong undergraduate education in the theory and practice of theatre and dance, to support the University's general education curriculum, and to enhance the cultural life of the campus community. The division's goal is to develop students' working knowledge and application of historical and contemporary theories and practices in performance, design and technology, and dramatic and critical literature. We strive to develop artists who are imaginative critical thinkers and effective communicators producing art that celebrates humanity and challenges complacency.*

## **Division of Theatre & Dance** **Faculty and Staff**

**Ethan H. Krupp\***, *Director of Theatre, Stagecraft,  
Fundamentals of Design, Stage Management,  
Lighting, Scenic & Sound Design*

**Marija Krtolica** *Beginning Jazz/Ballet*

**David A. Miller**, *Acting, Career Seminars,  
Script Analysis, Directing, Scriptwriting, Theatre Forum*

**Julie Petry**, *Dance Minor Program Director,  
Dance Performance Techniques, Dance History,  
Choreography, Ensemble, Repertory, Voice and Movement*

**Carrie Winship\***, *Introduction to Theatre,  
Script Analysis, Theatre Appreciation, Theatre History*

**Elizabeth Wislar**, *Costume Construction,  
Costume & Makeup Design, Theatre Appreciation*

**Sarah Forsythe\***, *Costume Shop Coordinator*

**Nick Troisi**, *Scene Shop Coordinator*

**Bruce Candlish\***, *Emeritus Faculty*

**Karen Anselm\***, *Emeritus Faculty Elect*

\* Denotes Alpha Psi Omega membership

*Bloomsburg University is accredited by  
National Association of Schools of Theatre (NAST).*

Bloomsburg University Players presents

# *Be More Chill*

Music & Lyrics by Joe Iconis

Book by Joe Tracz

Based on the Novel by Ned Vizzini

Directed by

Carrie Winship\*

Scenic Design

Titus O'Neil\*

Costume, Hair, &

Makeup Design

Elizabeth Wislar

Sound Design

Christopher Kilcullen  
& Ethan H. Krupp\*

Lighting Design

Dave Yezefski

Properties Design

Emily A. James\*

Music Director

Aaron Eldred

Choreography

Emaley Bacher

Fight & Intimacy Direction

Samantha Norton

Stage Manager

Sara Tessarvich\*

Technical Director

Ethan H. Krupp\*

Costume Director

Elizabeth Wislar

The world premiere production of *Be More Chill* was commissioned and originally produced by Two River Theater Company in Red Bank, NJ  
John Dias, Artistic Director / Michael Hurst, Managing Director

This work was supported by a Theatre Commissioning and Production Initiative grant from the Doris Duke Charitable Foundation

Orchestrations and Arrangements by Charlie Rosen

*BE MORE CHILL* is presented through special arrangement with  
R & H Theatricals: [www.rnh.com](http://www.rnh.com)

Sponsored by CGA and the College of Liberal Arts  
BU Players is a proud Arts in Bloom Resident Producer

## CAST

Jeremy..... Noah Eisengrein  
Christine..... Helen Allison  
Michael .....Maxwell Kreiss\*  
Jake .....Samuel Krause  
Rich ..... Brian Katzmaier\*  
Chloe.....Arianna Birnbrauer  
Brooke..... Alexis Griess  
Jenna..... Reagan Venturi\*  
Jeremy's Dad, Mr. Reyes, and Scary Stockboy .....  
..... Mark Obrzut  
The Squip ..... Kali Morgia\*  
Ensemble ..... Brandon Ferguson\*, Jaquelyn Morales,  
..... Madison Mahlendorf, Bradley Roth,  
..... Meghann Reeder, Danielle Whelan

\* Denotes Alpha Psi Omega membership

## **Band**

Keyboard 1, Conductor ..... Aaron Eldred  
Keyboard 2, Theremin, Alto Saxophone,  
Baritone Saxophone, Recorder.....Doug Cole  
Trumpet/Flugabone/Recorder .... Randy Baxendale, Jr.  
Guitar/Vocoder .....Jacob Logan  
Bass Guitar .....Joseph LaMarca  
Drums/Percussion..... Michael Shaw

## **Setting**

Suburban New Jersey

## **Time**

The Present

## **Production Staff**

Assistant to the Director ..... Lindsay Cocker\*

Assistant Scenic Designer ..... Chelsea Soto\*

Assistant Costume Designer ..... Michael Lamberti\*

Assistant Lighting Designer ..... Danielle Wilk\*

Assistant Sound Designer ..... Alex C. Fortier\*

Assistant Stage Managers ..... Logan Graves, Jackson Gray,  
..... Avery Roberts\*

Costume Shop Coordinator ..... Sarah K. Forsythe\*

Scene Shop Coordinator ..... Nick Troisi

Properties Coordinator ..... Maxwell Kreiss\*

Master Electrician ..... Production, Inc.  
..... (Dave Yezefski & Zak Knoll\*)

Light Board Operator ..... Sarah Goldstein

Sound Board Operator ..... Christopher Kilcullen

Sound Technicians ..... Alex C. Fortier\*, Benjamin Roark,  
..... Nicola Scicchitano

Wardrobe & Make Up Crew ..... Olivia Hershey, Steph Phillips,  
..... Heather Rummings\*, Danielle Wilk\*

\* Denotes Alpha Psi Omega membership

## Production Staff

Deck Shift Crew .....Noah Hartman\*, Geordie Jarvis,  
..... Reese Miller, Heidi O’Boyle,  
..... Reagan Radel, Leah Uholik

Lighting & Sound Crew .....Kirsten Hamilton, Lily Isajiw,  
..... Jonathan Lewis\*, Benjamin Roark

Properties Fabrication..... Emily A. James\*

Properties Crew ..... Alison Buck, Kyleen McHenry,  
..... Mackenzie Shoemaker, Olivia Spory

House Manager .....Micah Wagman

Head Usher..... Johnathan Carpenter, Kessa Morris

Ushers ..... *Introduction to Theatre* and  
..... *Theatre Appreciation* students

Marketing Crew.....Leah Hawk,  
..... Shalia Jenkins, Heather Rummings\*

Student Production Manager ..... Alex C. Fortier\*

Costume Shop Work Study Student ..... Chelsea Soto\*,  
..... Danielle Wilk\*

Costume Construction Students ..... Helen Alison,  
..... Arianna Birnbrauer, Marillen Castle,  
..... Brian Katzmaier\*, Michael Lamberti\*, Kali Morgia\*

\* Denotes Alpha Psi Omega membership

## **Production Staff**

Scene Shop Work Study Students.....	Justin Dalton, ..... Michael Lamberti*, Jonathan Lewis*, Chelsea Soto*
Scenery Construction Crew .....	Kira Loux*
Poster & Postcard Design.....	Graphic Design Club
Poster & Postcard Designers.....	Jacob Ulicny, Chad Haney, Lauren ..... Young, Rachel Shapiro, Lindsey Miscio
Graphic Design Club Student Coordinator .....	Paul Hoheisel
Graphic Design Club Advisor .....	Prof. James Dunlap
Lobby Concessions .....	Alpha Psi Omega
Lobby Concessions Lead.....	Shelby Snyder
Box Office & Concessions Assistant .....	Molli Serdock
Program Layout.....	Alex C. Fortier*, Ethan H. Krupp*
Archive Photographer .....	Chelsea Soto*, Micah Wagman
Music Director Faculty Mentor .....	Dr. David Tedford

\* Denotes Alpha Psi Omega membership



## **Musical Numbers**

### **Act 1**

*More Than Survive* – Jeremy, Michael & Students

*I Love Play Rehearsal* – Christine

*The Squip Song* – Rich & Ensemble

*Two-Player Game* – Jeremy & Michael

*Be More Chill* – The Squip & Ensemble

*Do You Wanna Ride?* – Brooke & Chloe

*Be More Chill Part 2* – The Squip, Jeremy & Ensemble

*More Than Survive (Reprise)* – Jeremy & Ensemble

*A Guy That I'd Kinda Be Into* – Christine & Ensemble

*Upgrade* – Brooke, Squip, Jake, Christine, Jeremy,  
& Ensemble

### **Act 2**

*Halloween Party* – Ensemble

*Do You Wanna Hang?* – Chloe

*Michael In The Bathroom* – Michael

*The Smartphone Hour (Rich Set A Fire)* – Jenna, Chloe,  
Brooke & The Girls

*The Pitiful Children* – The Squip & Ensemble

*The Pants Song* – Dad & Michael

*The Play* - Ensemble

*Voices In My Head* – Jeremy & Ensemble

## **House Rules and Information**

The photography, video, and/or audio recording of this performance by any means whatsoever is strictly prohibited.

Please turn off all cell phones and other electronic devices.

The men's restroom is at the back of house, near the elevator.

The women's restroom is directly below it, off the lobby.

You are welcome to bring concessions purchased in the lobby into the theatre, but please clean up at the end of the performance and deposit recycling and trash in appropriate containers.

## **Acknowledgements**

Advance Ticket Sales and Box Office Services have been supplied by Performing Arts Box Office students and staff;  
Abigail Manns, Technical Director.

Special funding for intelligent lighting rental provided by a College of Liberal Arts Curricular Enhancement Grant.

Special thanks to Performing Arts Facilities for the use of specialized theatrical and audio equipment.

Special thanks to Instructional Media Services for the use of specialized video equipment.

## **Special Thanks**

Dr. Bashar Hanna  
Dr. Diana Rogers-Adkinson  
Dr. Mark Bauman  
Dr. Heather Feldhaus  
Dr. James Brown  
Rona Anderson  
Dr. Stephen Clickard  
Linda Fisher  
Dr. Alan Baker  
Prof. Paul Patinka  
Prof. Matt Leece  
Dan Knorr  
Abby Manns  
Asa Kelley  
Larry Zapotocky  
Neil D'Amato  
Joyce Grosz  
Dawn Ritter  
CGA Executive Board & Student Senate  
Jeff Ulanoski  
Mike Smathers  
Scott Shaffer  
The Bloomsburg University Duplicating Office  
The Bloomsburg Theatre Ensemble  
Heath Hansum  
Chris Kingsley  
Carly Carman  
Kyle Boyes  
Jeffrey Green & Sweetwater Sound, Inc.

## **Mental Health & Support Resources:**

### **On-Campus Resources**

#### **Bloomsburg Student Counseling Center**

240 Warren Student Services Center  
Walk-In hours M-F 1:00 pm - 2:30 pm  
(570) 389-4255  
<http://intranet.bloomu.edu/counseling>

#### **Student Health Center**

Kehr Union Building, #324  
M-F 9:30 am - 6:00 pm  
(570) 389-4451

#### **Title IX Coordinator**

Student Service Building, 54  
M-F 8:00 am - 4:30 pm  
(570) 389-4529

#### **Women's Resource Center**

Schuykill Hall  
M-F 10:00 am - 4:00 pm  
(570) 389-5283

24 Hour Text/Call Advocate & Resource Line  
(570) 336-4994

#### **LGBTQA Resource Center**

140 Warren Student Services Center  
Walk-In hours M-F 10:00 am - 4:00 pm  
(570) 389-2819

#### **Dean of Students Office**

Kehr Union Building, #101  
M-F 8 am - 4:30 pm  
(570) 389-4734

## **Mental Health & Support Resources:**

### **Community Resources**

#### **TAPLINE**

24 hour free psychological telephone support  
1-800-222-9016

#### **National Suicide Prevention Lifeline**

24/7 Suicide Prevention Hotline  
1-800-273-8255

<https://suicidepreventionlifeline.org/chat/>

#### **The Women's Center, Inc.**

111 North Market Street, Bloomsburg, PA  
(570) 784-6631

24-Hour Hotline: (800) 544-8293  
or (570) 784-6631

#### **Town of Bloomsburg Police Department**

119 East 7th Street. Bloomsburg, PA  
(570) 784-6300 (non-emergency)

# Everybody

By Branden Jacobs-Jenkins

*Everybody* is the Spring 2020 mainstage production in the BU Players 2019-20 season.

Directed by Professor David A. Miller, auditions for *Everybody* will begin on Sunday, November 10, 2019 with initial auditions (by appointment) and will follow with callbacks for invited actors. Those called back will attend an ensemble callback in the evening on Wednesday, November 13, 2019.

Rehearsals for *Everybody* will begin in the first week of the Spring semester and will be scheduled Monday through Thursday at 6:30pm to 10:30pm and Sundays 1:00pm to 5:00pm and 6:30pm to 10:30pm with longer weekend and weeknight hours during final technical rehearsals.

*Everybody* performs February 26—March 1 in the Alvina Krause Theatre in downtown Bloomsburg.

**For more information, visit the callboard outside the Temporary Theatre Lab (McCormick 2314) or visit us on the web at [intranet.bloomu.edu/buplayers-auditions](http://intranet.bloomu.edu/buplayers-auditions)**

More about the show:

Travel with *Everybody* (chosen from amongst the cast by lottery at each performance) as they journey through life's greatest mystery—the meaning of living. This modern take on the fifteenth-century morality play *Everyman* which features characters such as Love, Death, and Friendship, was a finalist for the prestigious Pulitzer Prize for Drama in 2018. "Was that a dream or was that a vision? Were you even asleep? Or are you really dying? Is this how Death comes to you? In a dream?"

# Theatre and Dance at Bloomsburg University

Participation opportunities are available to all BU students.

## **Auditions**

Auditions for BU Players productions are open to all BU students. For detailed information about auditions, see the callboard outside the Temporary Theatre Laboratory (McCormick 2314) or visit us on the web at <http://bloomu.edu/buplayers-auditions>

## **Production/Crew Opportunities**

For every production, including plays, musicals, and the annual dance concert, there are opportunities to work behind the scenes in areas such as costumes, sets, stage crew, stage management, house management, and publicity. To find out more about getting involved in production work, speak to a theatre faculty member.

## **Theatre Major**

### **Theatre or Dance Minor**

If you would like to get more involved in theatre, consider becoming a Theatre Major (with concentrations in Performance, Design/Technology, or Integrated) or a Theatre or Dance Minor. For information, visit [www.bloomu.edu/theatre-dance/](http://www.bloomu.edu/theatre-dance/) or speak with a theatre and dance division faculty member.



Alpha Psi  
Omega  
National Theatre  
Honor Society

Alpha Psi Omega is the National Theatre Honor Society for participants in collegiate theatre. The Alpha Cast was founded at Fairmont State College (now Fairmont State University) on August 12, 1925 by Professor Paul F. Opp.

Bloomsburg University is home to the 39th oldest of the 1,074 casts nationwide, identified as the Alpha Omicron cast and inducted its first class on March 3rd, 1928. The 98th pledge class at Bloomsburg University was inducted during the Spring 2019 semester.

Students are selected for membership based on their activities in theatre at BU and their leadership in the BU Players and Theatre & Dance Division.

***Alpha Psi Omega  
Alpha Omicron Cast  
Executive Board 2019-20***

**Brandon A. Ferguson, President**

**Kamryn T. Felty, Vice-President**

**Danielle M. Wilk, Treasurer**

**Lindsay Cocker, Secretary**

**Heather R. Rummings, New Member Educator**



# BU Players

## ***Executive Board 2018-19***

**Kamryn T. Felty**, President  
**Brandon A. Ferguson**, Vice-President  
**Heather R. Rummings**, Secretary  
**Reagan E. Venturi**, Treasurer  
**Chelsea R. Soto**, Historian  
**Kali M. Morgia**, PR & Marketing  
**Maxwell Kreiss**, Events Coordinator

## **CENTER FOR VISUAL & PERFORMING ARTS**

The Department of Music, Theatre and Dance, as well as Art & Art History, English, and Mass Communications contribute to Bloomsburg University's Center for the Visual and Performing Arts. The CVPA was formed to provide a vital link between the university and the Bloomsburg community, primarily through its downtown performance locations.



## **at Bloomsburg University**

Arts in Bloom celebrates the value of the arts and enriches lives throughout our community by producing and promoting a robust performing and visual arts program at Bloomsburg University. The energy of robust university arts programming attracts students to our university and citizens to our town and region, and it unites them.

The series is comprised of high-caliber professional touring headliners as well as performances and exhibits by Bloomsburg University's resident producers.

- Arts in Bloom seeks to inspire audiences throughout our community and provide aspirational experiences to students seeking a professional future in the arts.
- Arts in Bloom uses the transformative power of the arts to build on and cultivate relationships across our diverse community.
- Arts in Bloom creates access to cultural experiences that nurture personal and professional growth and fosters a supportive atmosphere for students and their creativity.

# Arts IN BLOOM

## FILM SCREENING



Cowritten by J.C. Lee '05 with director Julius Onah and adapted from Lee's play of the same name, the film focuses on a married couple and their son, adopted from Eritrea, whose status as an all-star student is threatened by an alarming discovery by a devoted teacher.

**Thursday, Nov. 14, 7 p.m.**

**Friday, Nov. 15, 3:30 p.m.**

**Carver Hall, Gross Auditorium**

Free with suggested donation to Michael Collins's memorial Theatre scholarship.

***The Michael Collins  
Theatre Scholarship***

has been established  
to assist theatre students  
in their educational pursuits.

Contributions may be made to the  
**Bloomsburg University Foundation,**  
or in the donation box located in the lobby  
near the concessions stand.

Please designate donations to the  
**“Michael Collins  
Endowed Theatre Scholarship”**

For further information,  
and for additional options,  
please contact:

Ethan Krupp  
Director of Theatre  
(570) 389-4838  
ekrupp@bloomu.edu



*The Kennedy Center American College Theater Festival, part of the Rubenstein Arts Access Program, is generously funded by **David M. Rubenstein**.*

*Special thanks to The Harold and Mimi Steinberg Charitable Trust for supporting the John F. Kennedy Center for the Performing Arts' Kennedy Center American College Theater Festival.*

*Additional support is provided by The Honorable Stuart Bernstein and Wilma E. Bernstein; and the Dr. Gerald and Paula McNichols Foundation.*

*Kennedy Center education and related artistic programming is made possible through the generosity of the National Committee for the Performing Arts.*

This production is entered in the Kennedy Center American College Theater Festival (KCACTF). The aims of this national theater education program are to identify and promote quality in college-level theater production. To this end, each production entered is eligible for a response by a regional KCACTF representative, and selected students and faculty are invited to participate in KCACTF programs involving scholarships, internships, grants and awards for actors, directors, dramaturgs, playwrights, designers, stage managers and critics at both the regional and national levels.

Productions entered on the Participating level are eligible for invitation to the KCACTF regional festival and may also be considered for national awards recognizing outstanding achievement in production, design, direction and performance.

Last year more than 1,500 productions were entered in the KCACTF involving more than 200,000 students nationwide. By entering this production, our theater department is sharing in the KCACTF goals to recognize, reward, and celebrate the exemplary work produced in college and university theaters across the nation.

# MEET THE CAST AND CREW

**Helen Allison** is a senior at Bloomsburg University. She is studying Telecommunications and has a minor in Theatre arts. Helen has been involved in theatre since she was 11 years old and has also been teaching at a theatre camp for the past two summers. Performing is her biggest passion and she hopes to turn it into a lifelong career.

**Emaley Bacher** is a 2019 graduate of Bloomsburg High School. Previous choreography credits include *'Into the Woods'*, *'The Wizard of Oz'*, and *'Matilda the Musical'*. Favorite onstage credits include Benvolio (*Romeo and Juliet*), The Baker's Wife (*Into the Woods*), Dorothy Understudy/Swing (*The Wizard of Oz*), Movement Ensemble (*The Curious Incident of the Dog in the Nighttime*), and Dortchen Wilde in the world premiere of *Something Grimm: Tales from the Brothers G*. She is also a recurring dresser/deck crew member, as well as an Affiliated Artist at Bloomsburg Theatre Ensemble. Upcoming projects include *Miss Bennet: Christmas at Pemberley* (Bloomsburg Theatre Ensemble), and *The Wizard of Oz* (Danville High School). This is her first project with BU Players.

**Randy Baxendale** is a Senior Music Performance Major with a focus in Trumpet. He is the Vice President of the Jazz Ensemble, Secretary of the Concert Band, and Librarian of the Orchestra. Randy is the Trumpet Section Leader of the BU Marching Band, Jazz Ensemble, Wind Ensemble, and Concert Band. Randy has played in the Pit Orchestra in other productions such as *Anything Goes*, *Beauty and the Beast*, *Thoroughly Modern Millie*, and *Pippin*.

**Arianna Birnbrauer** is a sophomore at Bloomsburg University, and a dual major in ASL/English Interpreting and Theatre. Last year she had been a part of the production *The Importance of Being Earnest* as Cecily and in *Good Kids* as Madison. She took part in all four years of the drama program at her high school and has taken dance classes for five years. She has also taken part in many one act productions for her high school while working backstage on the set.

**Alison Buck** is a Sophomore Theatre Major with a Design and Technology Emphasis and a Spanish Minor. She has been in many performances during her high school career. Some of her favorites were being a Sentry (*Les Misérables*), Lt. Brannigan (*Guys and Dolls*), and Mrs. Fryer (*Radium Girls*). Ali is also involved with a summer

community theatre back home named Firebird Theatre. This summer she worked on the sets, being her dad's assistant stage manager, and props for Firebird's production *Big Fish*. She is also the president of Bloomsburg University's Improv Comedy Club. This is her second year with the BU Players and she is very excited to be a part of it.

**Lindsay D. Cocker\*** is a junior Secondary Education major with a focus in English and a minor in Theatre Arts. Recently, Lindsay has taken on the role as Assistant Director for the ARC Angels Onstage for their performance of *Disco Wizard of Oz* and *Moon-Ventures*. In the past, Lindsay has fulfilled the role as Assistant Stage Manager in the following productions: *Good Kids*, *Lucky Stiff*, *Our Town*, and *West Side Story*. Serving the same role, Lindsay carried out her position with the ARC Angels Onstage in two of their productions: *The Basics* and *The Polar Express*. In hopes to gain knowledge in other aspects of the theatre, Lindsay has served as the sound board operator and light board operator in various student-driven projects for the BU Players. After Lindsay finishes her undergraduate degree, she plans to pursue a Master of Education in Educational Leadership.

**Douglas Cole** is a music educator and graduate of Bloomsburg University. He has performed with the Forte Tenors, Vaughn Nark, and all of Bloomsburg University's performance ensembles. A multi-instrumentalist, he has studied Saxophone and Clarinet with Erica Sechler and Nelson Hill, Bassoon with Wayne Gaver, Flute with Dr. Tracey Schmidt Jaynes and Leslie Cullen, Piano with Dr. Charisse Baldoria and Organ with Shirley Smith. He is a recipient of the Matucci Award for Musical Excellence and the Michael S. Repella Scholarship.

**Noah Eisengrein** is a junior with a double major in Theatre (Performance Emphasis) and Biology: Natural History. So far, Noah has appeared in two previous BU Players productions, as John Worthing (*The Importance of Being Earnest*) and Gottlieb Biedermann (*The Arsonists*). Noah has also sung bass with student-run a capella group Beats By Bloom. Previous roles also include: Shrek (*Shrek the Musical*), Benny Southstreet (*Guys and Dolls*), Corey Palmer Jr. (*Back to the 80s*), and Ensemble (*Do Black Patent Leather Shoes Really Reflect Up?*).

**Aaron Eldred** is a Senior, Double Majoring in Music with a concentration in Classical Guitar Performance, and Geography and Planning at Bloomsburg University. He currently studies Guitar with Dr. Matthew Slotkin, and Piano/Composition with Dr. Charisse Baldoria. He has been performing

with the Bloomsburg University Guitar and Jazz Ensemble (Bass, Piano) for the past four years. Since 2011, Aaron has been working with various theatres throughout NEPA. Starting at KISS Theatre in Wilkes-Barre, he has appeared in several productions including: *Sweeney Todd: The Demon Barber of Fleet Street* (Sweeney Todd), *Titanic: The Musical* (Captain E.J. Smith), *RENT* (Tom Collins), and *Spring Awakening* (Melchior Gabor). He has also made numerous appearances as Music Director for shows such as *Jesus Christ Superstar* (The Theatre at The Grove), *Cabaret* (Little Theatre of Wilkes-Barre), *Urinetown* (KISS Theatre Company) and *A Funny Thing Happened On The Way to The Forum* (The Pennsylvania Playhouse-Bethlehem). Outside of working as a Music Director, Chef and Handyman, Aaron enjoys fishing, playing/listening to music, learning and cooking.

**Brandon Ferguson\*** is a Junior at Bloomsburg University of Pennsylvania. He is a Theatre Performance Major with a Business Marketing Minor. He was seen last on stage in the BU Players' production of *Good Kids* as Tanner. He was also seen in the BU Players' productions of *Machinal* as the Filing clerk, Bellboy, Barber, Boy at Bar and Others as well as *The Arsonists* as a Fireman. He was also a part of the workshop production for the *Untitled Cemetery Project* as several different characters. He as well has been a part of the deck crew for the BU Players' production of *The Importance of Being Earnest*. He has also been a part of the Directing Projects as an actor. He is the President of the Honors Theatre Fraternity Alpha Psi Omega and the Vice-President of BU Players. He has also performed in several shows and performance/singing showcases throughout the York, Pennsylvania area and at Central York High School such as *The Addams Family* (Mal Beineke), *Almost Maine* (Steve), *Sister Act* (Ernie), *The Little Mermaid* (Pilot), *The 25th Annual Putnam County Spelling Bee* (Dan Dad) and *REACH: The Preview* (Even). He's been taking voice lessons for 3 years and has had 2-3 years of Improv training in York and New York City with UCB Comedy.

**Sarah K. Forsythe\*** has been the costume workshop coordinator for over 50 productions at BU and seen everything, including vengeful pandas from space to elegant Victorian tea attire. She is responsible for supervising an amazing group of talented students, as well as collaborating with faculty and guest artists to get well over 1,500 individual costumes onstage. Sarah has also continued her professional development as a set and costume designer. A few recent design projects include costumes for *Body Awareness*, *Romeo and Juliet*, and *One Slight Hitch* at Bloomsburg Theatre Ensemble. She also designed the costumes for Bloomsburg University's



production of *Neighborhood 3: Requisition of Doom*. This production was selected as one of only 8 shows out of all the Kennedy Center American College Theatre Festival productions produced in Region 2 (consisting of schools in OH, NJ, MD, and Western NY.) during 2015 for performance in front of 1,000 festival participants at the KACTF Region 2 Festival 48 at West Chester University in January 2016.

**Sarah Goldstein** is a Sophomore Theatre Arts major with an emphasis in Design/Technology and a Mass Communications major with an emphasis in Telecommunications. Last semester she was a member of the deck crew for the Dance Minor Concert.

**Logan Graves** is a freshman at Bloomsburg University majoring in Psychology. Logan has been part of the stage management team for multiple shows including *Noises Off*, and *The Little Mermaid*. This is her first BU Players performance.

**Jackson Gray** is a Theatre Arts major at Bloomsburg University in the Integrated Emphasis focusing on Stage Management. Previous stage management experience includes 4 high school productions of *Around the World in 80 Days*, *Beauty and the Beast*, *Cinderella*, and *Chitty Chitty Bang Bang*. Additionally, he has worked on over five school and community-wide events and two productions interning as Assistant Stage Manager at the Kimmel Center for the Performing Arts in Philadelphia on Disney's *The Little Mermaid* and *Frozen*.

**Alexis Griess** is a Freshman Double Major in Theatre Arts with a Performance Emphasis and Liberal Art Music with a Vocal Performance Emphasis. She is a part of the Honors College, Concert Choir, and Leading Tones a cappella group. Previous Roles include: Donna (*Mamma Mia*), Singing Telegram Girl (*Clue*), Congregant (*The Hunchback of Notre Dame*), Elle's Mom/Harvard Student (*Legally Blonde*), Tammy (*Hairspray*), and Kate (*Legally Blonde Jr.*).

**Kirsten Hamilton** is working in the theatre for the first time. Growing up in Alabama, she eventually migrated to Bloomsburg where she is studying Theatre Arts at Bloomsburg University. While in high school, she enjoyed singing in concert choir, and was selected for All County Chorus.

**Noah Hartman\*** is new to working behind the scenes on Be More Chill this semester. He is a junior going for a BA in Art Studio: Fabric Design with a Minor in Theatre. His prior experience involves working as an actor as four

roles in various musicals at Millville High School. He also recently performed as Mr. Krabs/ Nash in BUSTED at Bloomsburg University. He is excited to work behind the scenes and plans to work a Sight & Sound Theatre Ensemble in Lancaster one day.

**Leah Hawk** is a sophomore and transfer student at Bloomsburg University, majoring in Theatre Arts with an emphasis in Performance. She is also minoring in Creative Writing as well as Communication Studies. Previously, she attended Kutztown University where she was involved in the theatre club, Actors Creating Theatre (ACT). Through ACT, Leah was in a productions of *Grease* and *Ten Minute Plays*, and she also assistant directed their Spring Music Showcase. Leah has also been involved with Stagemakers at the Lehigh Valley JCC and Star of the Day.

**Olivia Hershey** is a Sophomore Integrated Theater major at Bloomsburg University. This will be her third time working Wardrobe and her second time working in the AKT.

**Lily Isajiw** is a Freshman Theatre Arts Major with a Performance Emphasis here at Bloomsburg University. Along with being well involved in the theatre community, she currently is involved in Marching Band and is singing with the Concert Choir. Lily has been performing in musicals and plays since the fifth grade. Previous roles include: Ensemble (*Urinetown: The Musical*), McGarrigle (*The 39 Steps*), Grandma Addams (*The Addams Family Musical*), Sheriff Atkins (*Book of Days*), Mrs. Mayor (*Seussical: The Musical*), Pinocchio (*Shrek: The Musical*), Hanley (*The Jungle Book*) and much more. Besides acting, Lily has also participated as a directing intern for a production of *The Hunchback of Notre Dame*.

**Emily A. James\*** is a recent graduate of Bloomsburg University's department of Music, Theatre and Dance with BA focused on Technology and Design. She spent her time there as the Props Designer for the Bloomsburg University Players for 7 consecutive semesters. With works including Properties Design for *The Rocky Horror Show*, *Harvey*, *The Importance of Being Earnest*, and *The Arsonists*. She has received KCACTF certificates of merit twice for her work at Bloomsburg University. She has also completed an internship with the lovely Bloomsburg Theatre Ensemble as the assistant to the Properties Designer for the world premiere of *Gunpowder Joe* by Anthony Clarvoe. She is excited for this final send off from the BU Players before she begins her cross-country trek to Seattle, WA, hoping to find her home in theatre there. Thank you for your continued support of the BU Players, and enjoy the show!

**Shalia Jenkins** is a junior studying Digital Forensics with a double minor in Theatre and Criminal Justice. She is heavily involved on campus. Shalia is the President of the Rho Iota Chapter of Delta Sigma Theta Sorority, Incorporated. She teaches African- Caribbean dance in the Bloomsburg University Dance Ensemble. Shalia is also the Assistant Treasurer of the National Association for the Advancement of Colored People (NAACP). Theatre performance has been her passion for years. Shalia Jenkins has acted and sung in plays throughout her childhood and young adulthood, and she hopes to gain further knowledge by working on future productions such as this.

**Brian Katzmaier\*** is thrilled to be able to return once more to the AKT stage to perform in his first BU Players musical. Rich has been a fun and challenging role for Brian, expanding his vocal and dance skills while providing a most thrilling journey to find his inner chillness. Brian is an Integrated Theatre major at Bloomsburg University in his final semester. He has appeared in previous Player productions such as *Good Kids* and *Machinal* and has served as Assistant Stage Manager and Associate costume Designer on other shows. After graduation he will be working for a summer camp helping in their theatre department and attending Bloomsburg University Graduate school where he hopes to have future chances to return to the AKT Stage with the BU Players in their future productions!

**Chris Kilcullen** is a music department major and guitar player in the Audio/ Visual Recording track with an eye at dual majoring in Telecomm, and minoring in Theater Arts. He is a recent readmit to Bloomsburg, but before that, he earned his certificate in audio engineering in NYC at the Institute of Audio Research. He worked in New York in the years that followed as a freelance audio technician and videographer, working on productions ranging from weddings to independent films. This is his first production working with the BU Players.

**Sam Krause** is sophomore at Bloomsburg University majoring in Mass Communications with a minor in Theatre Performance. Previous roles include Marius Pontmercy in *Les Miserable*, Merriman in *The Importance of Being Earnest*, and Connor in *Good Kids*.

**Maxwell Kreiss\*** is a sophomore Theatre Arts Major with an Integrated Theatre emphasis. In previous BU Players productions, they have acted as an assistant stage manager for *Good Kids*, and as light board operator for *The Importance of Being Earnest*, as well as assisting with properties

construction and coordination. Max is thrilled to be able to explore the roles of both actor and props coordinator for this performance, and hopes to explore more areas of theatre production during their time at BU.

**Ethan H. Krupp\*** serves as the Director of Theatre and Technical Director for the Bloomsburg University Theatre & Dance Division, as well as a lighting, scenery, properties, and sound designer. He has served as technical director for over 50 BU Players' productions. Previous designs for BU Players include *Machinal* and *12 Angry Jurors*, (scenery), *anon(ymous)* (lighting), and *The Arsonists* (sound, co-designer). He has also designed for BU Players/Bloomsburg Theatre Ensemble co-productions such as *Flood Stories, Too.* and *Hamlet* (scenery). During the summer of 2019, he designed lights for *Something Grimm—Tales from the Brothers G* for BTE. He teaches Lighting, Scenic, and Sound Design, Stagecraft, Stage Management, and Fundamentals of Theatre Design. He holds an MFA in Theatre Design and Technology from University of Montana and a BA in Journalism & Mass Communication from Washington and Lee University.

**Michael Lamberti\*** is an Integrated Theatre Major and Mass Communications Major telecommunications track. Michael specializes in costume design, acting, videography, cinematography, screen writing, deck crew, editing. He's also a member of BU Now, National Broadcasting Society, The 501st (Star Wars Costume Charity Club), and the BU Players. He recently completed an internship with Diagonal View under by Sky Media in London, England this past summer. He was recently cast in the directing class projects and is working on his independent film which is schedule to debut in Spring 2020.

**Jonathan Lewis\*** is a Senior Integrated Theatre major. Jonathan is a Scenic Designer, costume designer, director, and Playwright. Other projects include directing *Kill Me Please* and *Self Torture and Strenuous Exercise*, Writing *Creatures of the Night*, Assistant Stage Manager for *In the Dark*, and Sound Board Operator for *Harvey*. In addition to the Bloomsburg University Players, Jonathan is also involved in the Bloomsburg University Anime and Science Fiction Clubs, as well as belonging to the Honors societies for Theatre and Anthropology, Alpha Psi Omega, and Lambda Alpha, Respectively.

**Kira Loux\*** is a second semester Senior with a double major in History and Theatre. She serves on the Bloomsburg Theatre Ensemble board of trustees and works in the Bloomsburg University archives. Previous scene

shop work includes welding the set for *Machinal*. Her dramaturgical work includes *Harvey*, *The Arsonists*, and *The Importance of Being Earnest*. Additionally, Kira has played the role of Nora in *Riders to the Sea* and was an assistant stage manager for *The Arsonists*.

**Madison Mahlendorf** is a sophomore pursuing a bachelors in Psychology with minors in Theatre Arts and ASL. She is thrilled to be in her first mainstage production at Bloomsburg University. She is currently involved in the university's concert choir and Leading Tones a cappella group as well. She is interested in becoming a drama therapist and/or working at Walt Disney World as an entertainer after graduating.

**Joseph La Marca** is a senior in high school, He plans to study music in the future so that he can continue to play bass and perform in more musicals.

**Kyleen McHenry** is a Theatre Arts major at Bloomsburg University of Pennsylvania. She owns a production and distribution company based in Berwick, Pennsylvania, where she hopes to make films, TV series, web series, and more. Kyleen has hosted web series on Ky's Korner Productions LLC's YouTube channel and blog page. She is known for Ky's Korner (YouTube Podcast), where she reviews movies, books, and more. Also, she is the host of a YouTube based talk show called *The Talk* where she has interviewed members of the acting/writing community. Her first feature length film in the works, called *Blood Ties*, and will talk about Jack the Ripper (from his perspective). It is currently in development with plans to film Summer 2020.

**Jaquelyn Morales** is a Freshman Theatre Major with a Performance Emphasis. She has been part of multiple productions throughout her pursuit of theatre during her high school years, including: *Jesus Christ Superstar* (Ensemble), *In the Middle of Grand Central Station* (Errol), *Side Show* (Daisy Hilton), *Scenes & Revelations* (Helena Longnecker), and *Once on This Island* (Erzulie). Aside from theatre, Jaquelyn enjoys singing, dancing, and writing spoken word poetry under the alias JQueen.

**Kali Morgia\*** is a junior at Bloomsburg University of Pennsylvania with a major in Mass Communications (Telecommunications) as well as a major in Theatre Arts (Performance). She is the PR and Marketing chair position for BU Players. Last semester, for her first mainstage, she played Amber in BU Players' production of *Good Kids*. Some productions she has been in outside of the university includes Paulette (*Legally Blonde*), Tracy Turnblad (*Hairspray*), Bonnie (*Anything Goes*), Helene (*Sweet Charity*), and many

other musical theatre productions across the span of 12 years. Theatre involvements outside of productions include being chosen to perform on a local award show for musical theatre, The Freddy Awards, with a solo in the opening number as a representative for Easton Area High School.

**Kessa Morris** is a Junior Mass Communications Major and Theatre Arts Minor. Previous productions include: Cathleen (*Riders to the Sea*), Life (*The Game*), and the role of Amber (*Tales of the Nightmare City of Ry'leh* a Student-driven project). This is her first time as Head Usher for a production.

**Samantha Norton (AEA, SAG-AFTRA, SAFFD)** is proud to be working with her colleagues in the Theatre and Dance Division and the BU Players again as fight choreographer and intimacy director for *Be More Chill*. Other featured BU credits include director for *The Rocky Horror Show*, *Feiffer's People*, fight choreographer for *Macbeth* and *Neighborhood 3: Requisition of Doom*. Samantha holds a Masters Degree in Opera/Theatre and is the voice dialect coach for Bucknell University's Theater program.

**Heidi O'Boyle** is a twenty year old freshman at Bloomsburg University. She started her theatre career her junior year of high school with *Fiddler on the Roof* (Ensemble). In her senior year she auditioned for her drama club's production of *The Strange Case of Dr Jekyll and Mr. Hyde* and she auditioned for the musical *Beauty and the Beast* (Ensemble). She recently auditioned for the dance team at Bloomsburg and was accepted into the Musical Theatre dance team.

**Titus O'Neil\*** is an alumnus of Bloomsburg University's theatre department. He currently works for Bucknell University's theatre department as the Entertainment Technology Assistant and as a freelance lighting and scenic designer. While attending Bloomsburg, Titus designed for many BU Players' productions and projects including dance minor concerts, *The Laramie Project*, and many directing projects. Most recently, he designed lights for BU Players' *Good Kids*.

**Mark Obrzut** is in his second year at Bloomsburg University studying under the Integrated Theatre Arts Major. He has had roles in 6 previous shows, including Bud Frump (*How to Succeed in Business Without Really Trying*) and Brandon Cates (*Getting Sara Married*). Both of these shows were performed at Wyoming Valley West High School in Plymouth Pennsylvania.

**Meghann Reeder** is a junior who is majoring in Anthropology. She has been in many shows at Millbrook Playhouse (Mill Hall, PA) including: *Into the Woods* (Witch), *The Rocky Horror Picture Show* (Phantom), *Rock of Ages* (Young Groupie) and *The Little Mermaid* (Ariel). This is Meghann's first BU Player's performance.

**Avery M. Roberts\*** is a Sophomore who is a Theatre Arts Major with an emphasis in Design/Technology. Avery has been a part of 25+ shows, Stage Manager (*West Side Story*, *The Polar Express*, *Disco Wizard of Oz*, *Collaboration of Skits*, and *Moon Ventures*), Child Wrangler (*Macbeth*), Assistant Stage Manager (*Shrek*, *School of Rock*, *A Collaboration of Musical Songs*, and *The Wizard of Oz*), Backstage Hand (*The Music Man*), and Deck Crew/Running Crew (*Beauty and the Beast*). She was part of an Internship at the Scranton Shakespeare Festival (2016), where she was Production Assistant/Sound/Mics (*Much Ado About Nothing*), Production Assistant/Assistant Stage Manager (*A Tale for Winter*), Production Assistant/Child Wrangler (*Macbeth*), and Production Assistant/Assistant Stage Manager (*A Funny Thing Happened On The Way To The Forum*). She also works for Live Nation and the IATSE (International Alliance of Theatrical Stage Employees) Local 329 as Load Out Crew (*Camp Bisco at Montage*), Load Out Crew (*God Smack Concert*), Load in Crew/Electrician (*Beautiful A King Carol Musical*), and Carpentry (*Finding Neverland*). She has worked previous shows here at Bloomsburg University as an Assistant Stage Manager (*Importance of Being Earnest*, *Good Kids*, and *The 9th Annual Dance Minor Concert*).

**Bradley Roth** is a Freshman at Bloomsburg University studying Political Science. Bradley has only been in one full production before, *Mary Poppins* at Hempfield High School. Bradley is also a member of Bloomsburg University's Husky Singers. Bradley is excited to be a part of his first BU Players performance.

**Heather Rummings\*** is a Junior double major with Theatre Arts Integrated Emphasis and Mass Communications Telecommunications Track at Bloomsburg University. She is from South Williamsport, PA. She is on wardrobe for this year's production of *Be More Chill*. She is Secretary for BU Players and New Member Educator for the theatre honor society Alpha Psi Omega. She has done 8 productions at Bloomsburg University with the BU Players. She was on wardrobe crew for *The Arsonists*, *Machinal*, the 8<sup>th</sup> *Dance Minor Concert*, and *Good Kids*. She also played the role of Jodie in the one act play *Find Me*. She was an Assistant Stage Manager for *The Importance of Being Earnest* last fall. She is excited to a part of this show.

**Nicola Scicchitano** is a Junior Theatre Arts Major with a Integrated Emphasis. She is also a member of BU Players. Previous productions include: Marketing (Good Kids), Deck Crew (The Importance of Being Earnest), Light Board Operator (Machinal), and Lighting Crew/Marketing (The Arsonists). She is also directing a 10-minute play this fall in the directing projects.

**Molli Serdock** was eleven years old when she attended a competition called International Presentation Of Performers (IPOP) out in Los Angeles. After the week of auditioning in front of hundreds of panels, she returned to New York and had a manager and agent. Molli auditioned for multiple shows and she was an extra in shows like *Elementary*, *The Americans*, *Louie*, and *I Killed My BFF*. She also portrayed a younger version of Carolyn Hennesy in *Celebrity Ghost Stories*. Molli was in films such as *The Coolest Girl In the world*, and *Uncut Gems* with Adam Sandler and Adenna Menzel. When she was fifteen years old she went to another competition in New York City at the International Modeling and Talent Association (IMTA). In High School, Molli was apart of almost all her schools' productions. As for musicals she was an ensemble member in *Anything Goes*, *Chess in Concert*, *West Side Story*, and *Kiss Me Kate*. and was an assistant director freshman year for the school drama called *Almost Maine*. Molli also was the lead in the comedies *Clue* and *The Curious Savage* at her school.

**Mike Shaw**, hailing from Gainesville, FL, is a musician that has been studying Audio/Video at Bloomsburg University under Matt Leece and studying Guitar with Matthew Slotkin. He grew up developing an eclectic taste in music, listening to many different genres over his adolescence that eventually led to him being involved in various bands of different styles over the years. At the age of 19 he did his first tour and recorded an album in a professional studio in Tampa, FL. Since then, he has gone on numerous tours and played many shows all over the country. He is currently in a band comprised of other Bloomsburg University students (Kendal Thompson and Aaron Eldred) called Phillip and the Flatheads. As of now Phillip has not been included in the line-up for reasons involving conflicting schedules.

**Shelby Snyder** is a Sophomore Integrated Theatre Arts Major. Some of Shelby's favorite roles include Rosa Bud (*The Mystery of Edwin Drood*), Martha Bessel (*Spring Awakening*), and Izzy (*Rabbit Hole*). Shelby is also a local hair and makeup artist.



**Chelsea Soto\*** is a senior Design/Technology Theatre major, interested in lighting design. She is the Historian of the BU Players and a member of Alpha Psi Omega. Previous roles include: Lighting Designer (*Narrator's Gone Bad*, 2018-19 Dance Minor Concerts (*Good vs. Evil* and *Hanging By a Thread*)), Costume Designer (2019 Dance Minor Concert (*Hanging By a Thread*), *PADME* 2019), and Stage Manager (*The Arsonists*, 2018-19 Dance Minor Concerts). Chelsea is a visual artist who loves working with different design elements such as lighting, scenery, special effects makeup, costume, sculpture, and charcoal drawing. She also enjoys writing short plays and hopes to continue doing so after college!

**Olivia Spory** is a freshman Theatre Major with a Performance Emphasis at Bloomsburg University. Characters that she has played include, Young Sala (*Letters to Sala*), Linus Van Pelt (*You're A Good Man Charlie Brown*), Ensemble (*Fiddler On The Roof*), and Ensemble (*Carnival!*). She has also worked on multiple shows in the backstage crews of *The Women of Lockerbie*, *Once Upon A Mattress*, and *The Miracle Worker* in her years at Scranton High School.

**Sara Tessarvich\*** is a BU Players' alumnus of the class of 2016. Previously she has stage managed BU Player's productions of *Neighborhood 3: Requisition of Doom*, *The Laramie Project*, and *The Rocky Horror Show*. She is excited to be back at her alma mater working with such a fantastic cast and crew.

**Leah Uholik** is a junior at Bloomsburg University majoring in Environmental Geoscience with a minor in Art Studio. This is the first time she has been a part of the crew on a production at BU.

**Reagan Venturi\*** is a Junior Theatre Performance Major. Notable credits include: Martha Jefferson (*1776*), Chloe (*Good Kids*), Jean (*August Osage County*), Gwendolen Fairfax (*The Importance of Being Earnest*), Doris (*Same Time, Next Year*), Cassie Cooper (*Rumors*), Georgie (*Spike Heels*), Joanne Galloway (*A Few Good Men*), Mayella Ewell (*To Kill A Mockingbird*), The Witch (*Into the Woods*), Nancy (*Oliver!*).

**Danielle Whelan** is a freshman ASL/English Interpreting major. She is also in the color guard in Bloomsburg's M&G Marching Band. This is her first BU Player's performance.

**Micah Wagman** is a senior Communication Studies major in the Interpersonal track, with a theater minor. He is a photographer for *The Voice* (School Newspaper) and *the Orbiter* (School Yearbook) and was head usher for last years performances of *The Importance of Being Earnest*. Although he is not on stage, he has acted in shows throughout high school. Freshman year he was in *The Laramie Project* and helped out backstage as a part of stage crew sophomore through senior year, so he has experience both on stage and back stage.

**Danielle Wilk\*** is in her fourth year at Bloomsburg University. She is a dual major majoring in both Theatre (Design/Technology emphasis) and Communication Studies (Leadership and Public Advocacy Track). She is the Treasurer for Alpha Psi Omega (National Honor Society for the Dramatics) and an active member of both BU Players and Husky Ambassadors. Danielle was also honored with the ability to travel and participate in the Prague Quadrennial 2019 (a fourteen-day international exhibition and symposium of design for the stage that takes place every four years) during this past summer. She was able to meet theatre artist from around the world, visit churches, tour castles, and see both a play (*A Midsummer Night's Dream*) and a ballet (*Kafka: The Trial*) at the National Theatre while she was in Prague.

**Carrie Winship\*** is a director, dramaturg, teacher, and scholar who joined Bloomsburg University as an Assistant Professor of Theatre in 2018. She teaches courses in theatre history, script analysis, and theatre appreciation. Carrie holds a Ph.D. in Theatre and Performance Studies from the University of Missouri; an M.A. in Theatre History, Theory, and Literature from Indiana University; and a B.A. in Theatre and Sociology from Emory & Henry College in Virginia. Carrie's research and creative scholarship explores women's voices in practice and theory, as well as new play development, theatre pedagogy, dramaturgical collaboration, and applied theatre. Select professional directing credits include: *Hamlet*, *Dark Creation: The Mary Shelley Project*, *Measure*, *Don Juan: After the War*, *Our Town*, *Three Sisters* (all with GreenHouse Theatre Project), *Baltimore Waltz* (Talking Horse Theatre), and *The sHORT Women's Play Festival 5* (Independent Actors Theatre). Select educational directing credits include: *Good Kids* (Bloomsburg University), *Stop Kiss* (Lycoming College), *The Lost Slipper* (University of Missouri), *Aria da Capo* (University of Missouri), *Reasons to be Pretty* (Indiana University), and *The Marriage Proposal* (Indiana University).

**Elizabeth Wislar** is a new faculty member with the Bloomsburg University Theatre and Dance Division. She previously worked as Costume Designer, Costume Shop Manager, and Instructor with Lycoming College in Williamsport, PA (2015-2019). Elizabeth graduated from Washington University in St. Louis, BA, cum laude, and earned an MFA in Costume Design and Technology from Pennsylvania State University. She spent 5 years (1996-1999, 2002) as the Assistant Designer/Head Draper to Bonnie Kruger for the annual Baroque Handel Opera Festival in Göttingen, Germany. Elizabeth spent close to twenty years as a freelance theatre artisan and small business owner based in Chicago, IL. She has designed Costumes for 200+ shows and built more than 150 productions in the Chicago area and nationally in collaboration with many of the prevailing theaters, opera companies, and local universities. In 2011 she founded Chicago Custom Costumes Inc., a private build shop located in the historic Fine Arts Building on Michigan Avenue in downtown Chicago. In 2015 Elizabeth sold her business and moved to the mountains of Pennsylvania, where her mission in life is to participate in the development of new artistic collaborators and technicians, training them for the multitude of diverse opportunities in professional theatre. Elizabeth's design work can also be seen locally with the Bloomsburg Theatre Ensemble. Past productions include *The Wizard of Oz*, *The Curious Incident of the Dog in the Nighttime*, *The Foreigner*, *The Legend of Georgia McBride*, and *The Diary of Anne Frank*. This is Elizabeth's first design with the Bloomsburg University Players.

**Dave Yezefski** is the owner of Production Inc. a Scenic, Lighting & Audio design firm specializing in theatrical events. Past and current clients include Wilkes University Theatre, University of Scranton Players, Scranton Prep Players and Bloomsburg Theatre Ensemble. Dave also serves as Lighting Designer and Technical Director for Scranton Civic Ballet Company.

**\* Denotes Alpha Psi Omega membership**

# Bloomsburg University Players

Sponsored by CGA

## 2019-20 BU Players Season

### ***Everybody***

By Branden Jacobs-Jenkins

Directed by David A. Miller

**February 26 through March 1, 2020**

Wednesday through Saturday at 7:30pm, Sunday at 3:00pm

Alvina Krause Theatre, Downtown Bloomsburg, PA

### ***10th Annual Dance Minor Concert***

Julie Petry, Artistic Director

**April 26 & 27, 2020**

Sunday at 3 pm, Monday at 7:30 pm

Mitrani Auditorium in the Haas Center for Performing Arts

Free admission

[www.buplayers.org](http://www.buplayers.org)

Twitter/Instagram: @buplayers

[Facebook.com/buplayers](https://www.facebook.com/buplayers)

## Arts in Bloom Headliners

### **The Queen's Cartoonists**

Saturday, Nov. 23 at 7:30 pm

Mitrani Auditorium in the Haas Center for Performing Arts

<https://bloomu.edu/arts-in-bloom>

## Bloomsburg Theatre Ensemble

### ***Miss Bennet: Christmas at Pemberley***

By Lauren Gunderson & Margot Melcon

November 29—December 29

Directed by Andrew Hubatsek

[www.bte.org](http://www.bte.org)